

## **DEP-600**

### **Electrophoresis power supplies**

We offer user-friendly and powerful electrophoresis power supplies for gel electrophoresis, blotting, and other demanding applications. The DEP series features an LCD touchscreen interface for easy programming and supports simultaneous use of four output sockets with three operating modes: constant voltage, constant current, and constant power.



## **Features**

- LCD Touchscreen: Simple programming and progress tracking.
- High Precision: Adjustable voltage, current, and power with automatic mode switching.
- Real-time Data Recording: USB support for data analysis.
- Easy Programming: Multi-step programs with tabular entry.
- Stable Performance: Multi-CPU control ensures reliability.
- Power Failure Recovery: ON/OFF setting based on experimental needs.
- Low Current Maintenance: ON/OFF setting as needed.
- Safety Protection and Alarm: Short-circuit protection, no-load protection, and a buzzer that can be set according to experimental needs.
- Space-saving Design: Anti-slip grooves enable stacking multiple power supplies, saving lab space.
- Adjustable Screen Angle: Adjustable pop-up feet for screen angle.
- Four Output Jacks: Operate four electrophoresis instruments simultaneously.



Pop-up feet



Anti-slip groove design



Real-time data recording



Low-noise, High-efficiency cooling fan

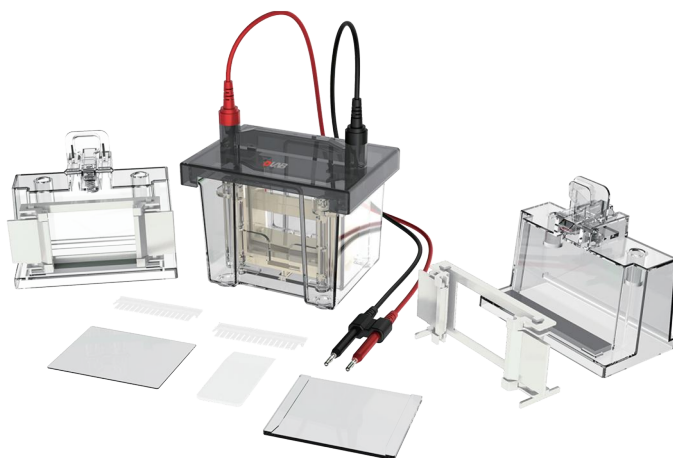
## Applications

The DEP-600 power supply covers the broadest range of applications in the market, meeting the power needs of small vertical electrophoresis, high-throughput electrophoresis, and blotting. It supports applications such as SDS-PAGE, Native-PAGE, common protein, and DNA/RNA electrophoresis.

Specifications	DEP-600
Display	LCD touchscreen
Output Types	Constant Voltage, Constant Current, Constant Power (continuously adjustable)
Voltage Range	0~600V
Current Range	0~600mA
Power Range	0~360W
Resolution	Voltage (1V), Current (1mA), Power (1W)
Time Setting Range	1min ~ 99h59min
Interface	USB
Output Sockets	4 sets
Voltage	100~140V/195~245V,50/60Hz
Operating Temperature and Humidity	0°C~40°C, ≤95%
Dimensions (L×W×H)	310×260×115mm
Weight	1.96kg

## **DL-Mini01**

### **Vertical electrophoresis tank (double plate)**



## **Features**

- This product is a device for vertical electrophoresis of a small amount of nucleic acid and protein samples
- The integrated design of the glass plate and the gasket ensures no glue leakage
- Can run two 8.3×7.3cm gels at the same time
- Special glue making device, simple and reliable operation
- Silicone sealing pad, anti-aging and durable
- Open the cover and cut off the power to ensure the safety of the experiment
- The limit function of the upper cover ensures that the positive and negative electrodes will not be installed incorrectly
- 99.99% high-purity platinum electrode, the best electrical conductivity, anti-corrosion and aging
- Equipped with a variety of thickness specifications rubber plate and sample comb to meet different experimental requirements
- It can be used together with DL-ZY02

## Technical Parameters

Gel area:  $8.3 \times 7.3\text{cm}$

Gel thickness: 0.75, 1.0, 1.5mm (optional)

Option tooth number of sample comb: 10, 15

Glass size: short glass plate ( $10.1 \times 7.3\text{cm}$ ) ; long glass plate ( $10.1 \times 8.2\text{cm}$ )

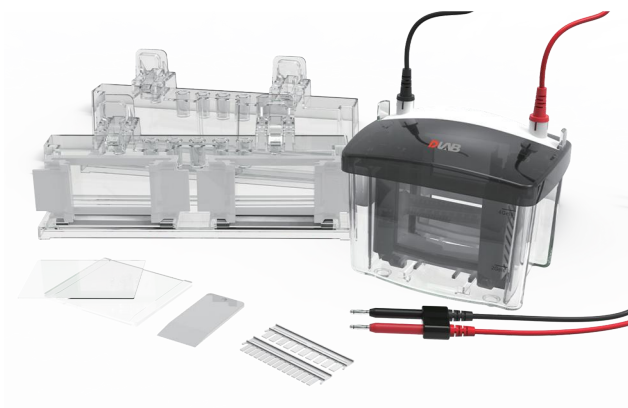
Timing range: 0-999min

## Standard configuration

Name	Unit	Quantity
Lid (power supply)	set	1
Bottom tank	pc	1
Electrode core	set	1
Gel glass thick plate	pc	5
Gel Glass thin plate	pc	5
10-well comb	pc	2
15-well comb	pc	2
Gel casing stand	pc	2
Casing frame	pc	2
Baffle	pc	1
Gel Releaser	pc	1

## **DL-MINI04**

### **Vertical electrophoresis tank**



## **Features**

- The edge gasket is permanently fixed on the long glass plate to ensure the precise alignment of the glass plate and prevent glue leakage;
- The cam-lock gel frame is easy to operate and can precisely align the glass plate on any plane;
- Special plastic electrophoresis combs do not inhibit gel polymerization Built-in ridges avoid air contact;
- Ensure uniform gel polymerization;
- The long glass plate with edge gasket is thickened so that the glass plate is not easy to break;
- The one-piece gel filling rack is arranged in parallel, and two gels can be observed at the same time;
- SDS-PAGE electrophoresis time: 45 minutes (200V constant voltage);
- High-purity platinum electrode wire to achieve the best electrical conductivity;
- The parameters and accessories of this product are fully compatible with imported similar products;
- This product is compatible with DL-ZY03 for blot transfer;

## Technical Parameters

Number of gels: 1-4 pieces

Gel thickness: 0.75, 1, 1.5mm

Option tooth number of sample comb: 10, 15 teeth

Glass size: short glass plate (10.1×7.3cm); long glass plate (10.1×8.2cm)

Gel size: hand-cast gel (8.3×7.3cm); precast gel (8.6×6.8cm)

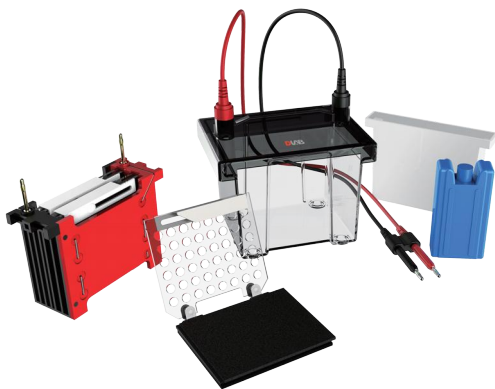
## Standard configuration

Name	Unit	Quantity
Lid with cables	Set	1
Bottom tank	pc	1
Electrode main core	Set	1
Electrode sub-core	Set	1
Gel glass thick plate	pc	1
Gel Glass thin plate	pc	5
10-well comb	pc	5
Gel casing stand	pc	2
Casing frame	pc	4
Single Gel Baffle	pc	1
Gel Releaser	pc	1

Prepare 1.0mm thick gel by default

## DL-ZY02

### Transfer electrophoresis tank



## Technical Parameters

Transfer area: 110×90mm

Used together with DL-MINI01, 04

Equipped with a special bubble roller for easy removal of bubbles

Effective transfer gel area: 110×90mm

## Standard configuration

Name	Unit	Quantity
Lid with cables	Set	1
Bottom tank	pc	1
Transfer core	Set	1
Gel Holder Cassette	pc	2
Ice cooling unit	pc	1
Blue cooling unit	pc	1

## Features

- This product is suitable for fast and high-quality transfer of small protein gels
- The tank body is made of highly transparent polycarbonate material, which is one-time injection molding, no leakage and impact resistance
- Positive electrodes are separated by 4cm to generate a strong electric field for efficient protein transfer
- 99.99% high-purity platinum electrode, better conductivity, corrosion resistance and aging
- Multiple security designs to avoid security issues caused by improper operation
- Built-in ice box or Blue cooling unit is optional to quickly absorb the heat generated during electrophoresis
- Special open Gel Holder Cassette, easy to operate
- Can transfer two 83\*73mm gels at the same time

## DL-ZY03

### Transfer electrophoresis tank



## Technical Parameters

Effective transfer area: 110×90mm

## Standard configuration

Name	Unit	Quantity
Lid with cables	Set	1
Bottom tank	pc	1
Transfer core	Set	1
Gel Holder Cassette	pc	2
Blue cooling unit	pc	1

## Features

- For fast, high-quality transfer of small protein condensation fronts
- The tank body is made of highly transparent polycarbonate material, which is one-time injection molding, no leakage and impact resistance
- Two 83\*73mm coagulation fronts can be transferred at the same time
- The distance between positive and negative electrodes is 4cm, generating a strong electric field for efficient protein transfer
- 99.99% high-purity platinum electrode, better conductivity, corrosion resistance and aging
- Built-in blue cooling unit to quickly absorb the heat generated during electrophoresis
- Special open Gel Holder Cassette, easy to operate
- Equipped with a special bubble roller for easy removal of bubbles



## DL-ZY04

### Transfer electrophoresis tank



## Technical Parameters

Effective transfer area: 110×90mm

## Standard configuration

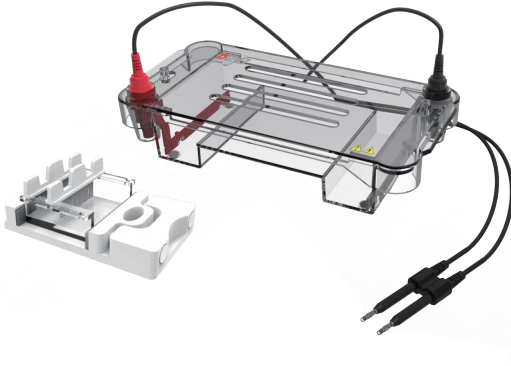
Name	Unit	Quantity
Lid with cables	Set	1
Bottom tank	pc	1
Transfer core	Set	1
Gel Holder Cassette	pc	4
Blue cooling unit	pc	1

## Features

- For fast, high-quality transfer of small protein condensation fronts
- The tank body is made of highly transparent polycarbonate material, which is one-time injection molding, no leakage and impact resistance
- Four 83\*73mm coagulation fronts can be transferred at the same time
- The distance between positive and negative electrodes is 5.5cm, generating a strong electric field for efficient protein transfer
- 99.99% high-purity platinum electrode, better conductivity, corrosion resistance and aging
- Built-in blue cooling unit to quickly absorb the heat generated during electrophoresis
- Special open Gel Holder Cassette, easy to operate
- Equipped with a special bubble roller for easy removal of bubbles

# DL-SUB01

## Horizontal Electrophoresis Tank



## Technical Parameters

Gel size: (W×L) : 60×75mm

Sample comb: 1.0/1.5mm 6/11wells

Buffer volume: 300mL

## Standard configuration

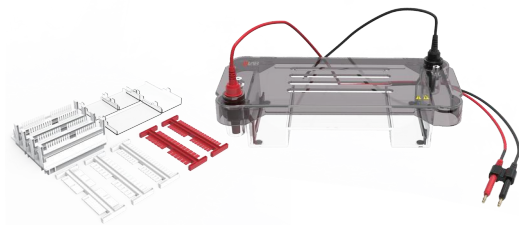
Name	Unit	Quantity
Lid with cables	set	1
Body tank with electrodes	set	1
Gel box	pc	1
Gel tray	pc	1
1.0mm thickness 6 wells comb	pc	2
1.0mm thickness 11 wells comb	pc	2
1.5mm thickness 6 wells comb	pc	2
1.5mm thickness 11 wells comb	pc	2

## Features

- Suitable for rapid separation, identification, preparation of DNA, and determination of its molecular weight
- Polycarbonate injection molding, no leakage
- The heat dissipation hole design on the upper cover effectively prevents condensation of water vapor
- Dedicated telescopic elastic glue maker, ensuring cleanliness and no glue leakage
- Limit function, effectively preventing reverse installation of positive and negative electrodes
- Detachable electrodes for easy replacement and maintenance
- 99.99% high-purity platinum electrode, the best conductivity, anti-aging

# DL-SUB02

## Multi-functional Horizontal Electrophoresis Tank



## Technical Parameters

### Gel area:

Large gel: 120×120 mm;

Wide gel: 120×60 mm;

Long gel: 60×120 mm;

Small gel: 60×60 mm.

Number of sample combs: 2, 3, 6, 8, 11, 13, 18, 25.

Buffer volume: 700 mL.

## Standard configuration

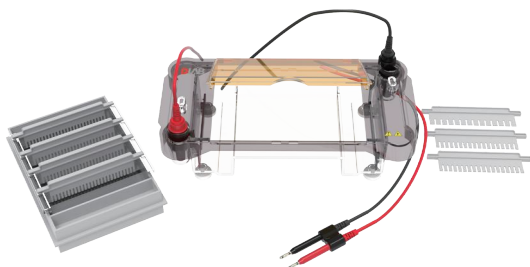
Name	Unit	Quantity
Lid with cables	set	1
Body tank with electrodes	set	1
Gel box	piece	1
Large gel tray (120 X 120)	piece	1
Wide gel tray (120 X 60)	piece	1
Long gel tray (60 X 120)	piece	1
Small gel tray (60 X 60)	piece	2
Sample comb: 2+3 well	piece	1
Sample comb: 6+13 well	piece	1
Sample comb: 8+18 well	piece	1
Sample comb: 15+25 well	piece	4

## Features

- Suitable for rapid separation, identification, preparation of DAN, and determination of its molecular weight
- Polycarbonate injection molding, no leakage
- Four different sizes of gels can be made, and two types of gel makers are optional
- Limit function to prevent reverse installation of positive and negative electrodes
- Detachable electrodes for easy replacement and maintenance
- 99.99% high-purity platinum electrode, the best conductivity, anti-aging
- The large glue and the small glue box are designed as one front and back, the big glue can hold up to four rows of combs at a time
- Fluorescent ruler on the bottom of the tray

# DL-SUB03

## Multi-functional Horizontal Electrophoresis Tank



## Technical Parameters

Gel size (W X L): 130 X 200mm、130 X 150mm

Sample comb: 1.0mm 14、18、26 wells

1.5mm 18-well

Buffer volume: 800mL

## Standard configuration

Name	Unit	Quantity
Lid with cables	set	1
Body tank with electrodes	set	1
Gel box	pc	1
Large gel tray (130 X 200)	pc	1
Small gel tray (130 X 150)	pc	1
1.0mm thickness 14 wells comb	pc	2
1.0mm thickness 18 wells comb	pc	2
1.0mm thickness 26 wells comb	pc	2
1.0mm thickness 18 wells comb	pc	2

## Features

- Suitable for nucleic acid electrophoresis, separation and identification of DNA and determination of its molecular weight
- Polycarbonate high-strength transparent plastic injection molding, no leakage, impact resistance
- Professional shielding blue light clamshell design, open the cover can effectively dissipate heat
- The bottom level adjustment knob can adjust the level of the electrophoresis tank
- Two different gel sizes, meet the needs of general and high-throughput electrophoresis
- The front and back design of the gel box, can save space
- The background strip at the bottom of the tray is more conducive to observing sample loading
- 99.99% high-purity platinum electrode, the best conductivity

Диаэм, Москва ■ ул. Магаданская, д. 7, к. 3 ■ тел./факс: 8 (800) 234-0508 ■ sales@dia-m.ru

С.-Петербург  
spb@dia-m.ru

Новосибирск  
nsk@dia-m.ru

Воронеж  
vrn@dia-m.ru

Йошкар-Ола  
nba@dia-m.ru

Красноярск  
krsk@dia-m.ru

Казань  
kazan@dia-m.ru

Ростов-на-Дону  
rnd@dia-m.ru

Екатеринбург  
ekb@dia-m.ru

Кемерово  
kemerovo@dia-m.ru

Нижний Новгород  
nnovgorod@dia-m.ru

мобильное приложение



www.dia-m.ru