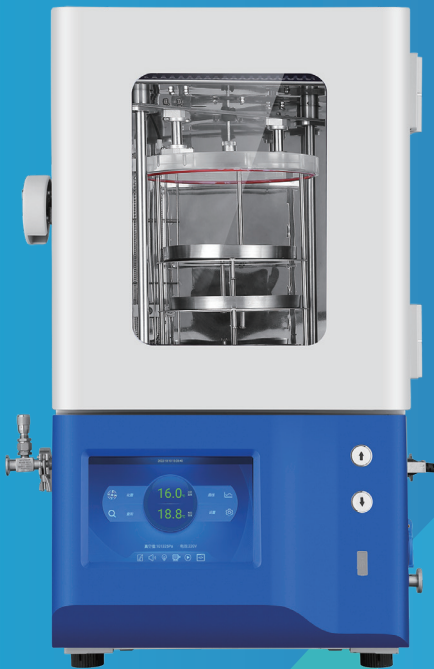


Freeze Dryer



DG-65Z04-10A

Scope of Application:

Applicable to biological research, medical laboratories for drying of biotechnological and pharmaceutical products, e.g. tissues and tissue extracts, bacteria, vaccines, and sera, also suitable to food research, chemical industry and other related scenarios for efficient lyophilization of samples.

Innovative Design

- Rapid sublimation speed and high drying efficiency
- IoT real-time management
- Automatic parameter storage

Product Advantages



Automatic parameter storage

Intelligent storage of the freeze-drying parameters, without setting them separately each time



The integrated design and totally enclosed environment make the sample pollution-free

The whole working cabin is closed, the freeze-drying process is isolated from the outside environment



Multiple alarm functions

Multiple alarms including cold trap cooling overtime, vacuum pump oil replacement reminder, temperature sensor fault/cold trap temperature sensor fault, vacuum sensor fault, condenser sensor fault, ambient temperature sensor fault, abnormal refrigeration, motor overcurrent, condenser dirty blockage, vacuum alarm, heating lamp life less than 10% alarm



The refrigeration efficiency is greatly improved

The evaporator is located in the freezing chamber, which directly cools the sample and improves the refrigeration efficiency, it can reach -60°C within 25 minutes



IoT real-time management

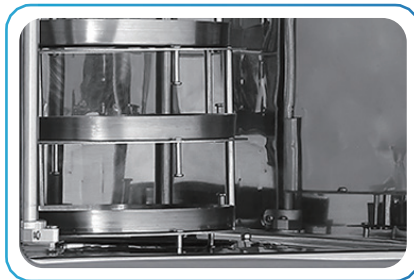
Separate account, authority management, configuration record function, data traceability, real-time monitoring of equipment status



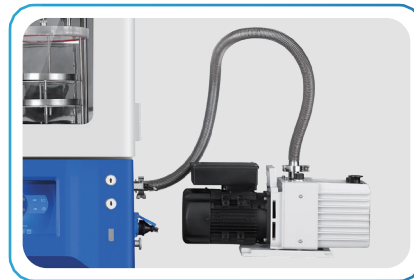
High sublimation speed and high drying efficiency

Excellent temperature uniformity, free from external influences, more energy-saving and environment-friendly

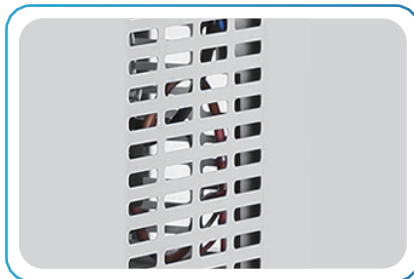
Friendly Design



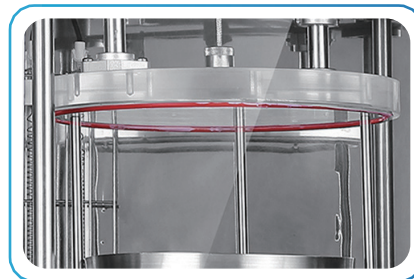
Automatic lifting shelves without manual operation



Vacuum pump port, convenient for oil change

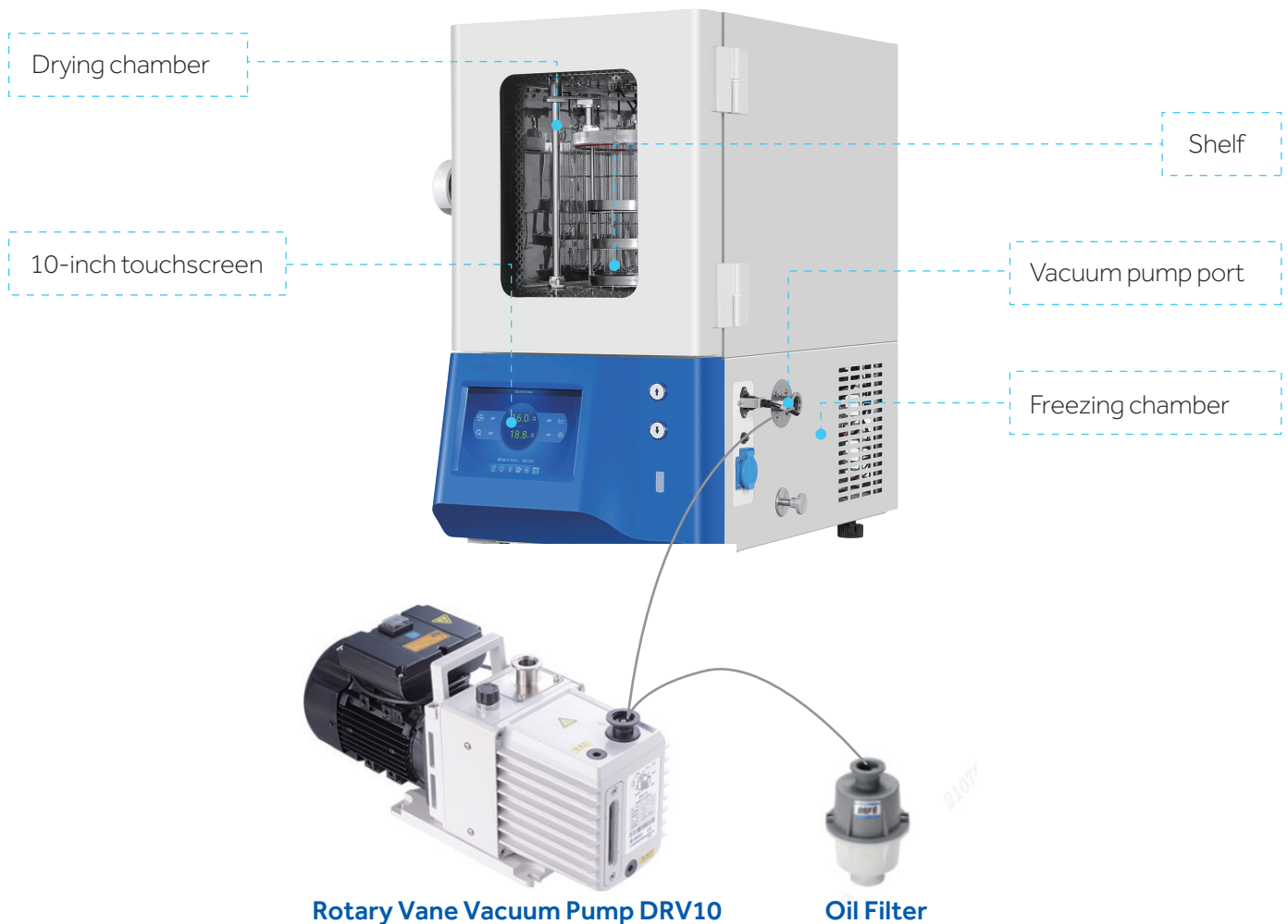


The filter can be easily replaced



The design of glass door ensures the working situation in the drying chamber visible at a glance

Product Parts



Product Advantages



- Built in oil check valve to ensure no oil return in the pump
- No spring rotating disc, low noise, low vibration, and long service life
- Superior product structure, easy disassembly and assembly, fast and convenient maintenance
- Built in oil pump for forced oil supply, achieving long-term continuous and stable operation of the pump below atmospheric pressure
- The combination of various cooling methods such as air cooling, oil cooling, and water cooling ensures good cooling effect, achieving long-term stable operation of the product and stable evacuation performance



Model		DRV10
Power Supply (V/Hz)		220/50
Pumping Speed (m ³ /h)		9.9
Ultimate Pressure	Gas Ballast Off (Pa)	5*10 ⁻¹
	Gas Ballast On (Pa)	5
Motor Power (kw)		0.4
Required Oil (L)		1.1
Air Inlet		DN25KF
Air Outlet		DN25KF
Sound Level (db)		65
Weight (kg)		25

Model	DG-65Z04-10A
Ice Condenser Temperature (°C)	-65
Condensation Efficiency	4.5kg/24h
Sound Level (dB(A))	≤45
Weight (kg)	145 (Equipment)+30 (Pump)
Ultimate Vacuum (Pa/mbar)	1/1*10 ⁻²
Maximum Condensation (kg)	4.5
Power (w)	900
Power Supply (V/Hz)	220/50
Dry Chamber Interior Dimesion (W*D*H)(mm)	404*374*398
Dry Chamber Capacity (L)	60
Freeze Cabinet Capacity (L)	13
Area (m ²)	0.1
Shelves	3 layers (Extensive)
Material Tray Diameter (mm)	Φ200
Maximum Spacing Between Material Trays (mm)	70
Exterior Dimension (W*D*H)(mm)	546*795*890
Packing Dimension (W*D*H)(mm)	665*900*1050

*Haier Biomedical reserves the right to change products and specifications without prior notice.

Диаэм, Москва ■ ул. Магаданская, д. 7, к. 3 ■ тел./факс: 8 (800) 234-0508 ■ sales@dia-m.ru

ДИАМ
сервисная лаборатория

С.-Петербург
spb@dia-m.ru

Новосибирск
nsk@dia-m.ru

Воронеж
vrn@dia-m.ru

Йошкар-Ола
nba@dia-m.ru

Красноярск
krsk@dia-m.ru

Казань
kazan@dia-m.ru

Ростов-на-Дону
rnd@dia-m.ru

Екатеринбург
ekb@dia-m.ru

Кемерово
kemerovo@dia-m.ru

Нижний Новгород
nnovgorod@dia-m.ru

мобильное приложение



www.dia-m.ru